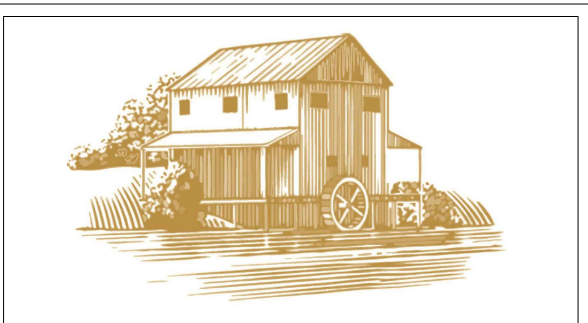


1 SOUTH ELEVATION @ KENNEDY STREET
3/16"=1'-0"

- BR-01 BRICK VENEER SB-01 STEEL
- MP-01 MP-02 METAL PANEL GR-01 GRANITE MC-01 METAL COPING

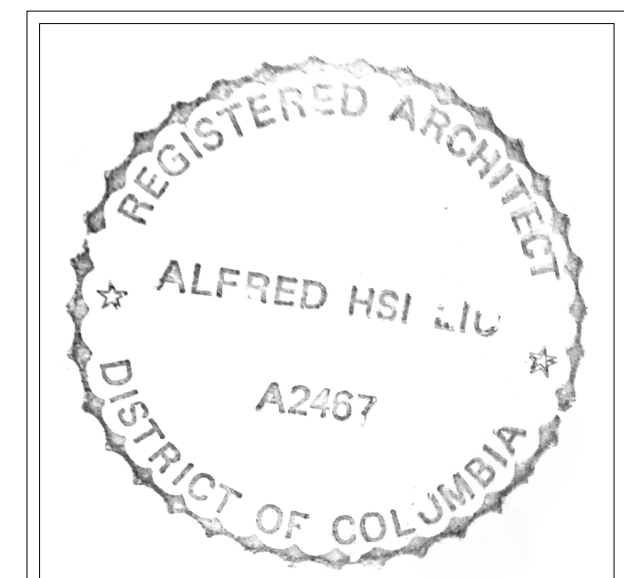
2 SHEET NOTES/LEGEND



COLOMA RIVER CAPITAL

Owner:
Coloma River Capital
Address:
1140 3rd Street NW,
Suite 2151,
Washington, DC 20002
Charles Paret
202-838-6941

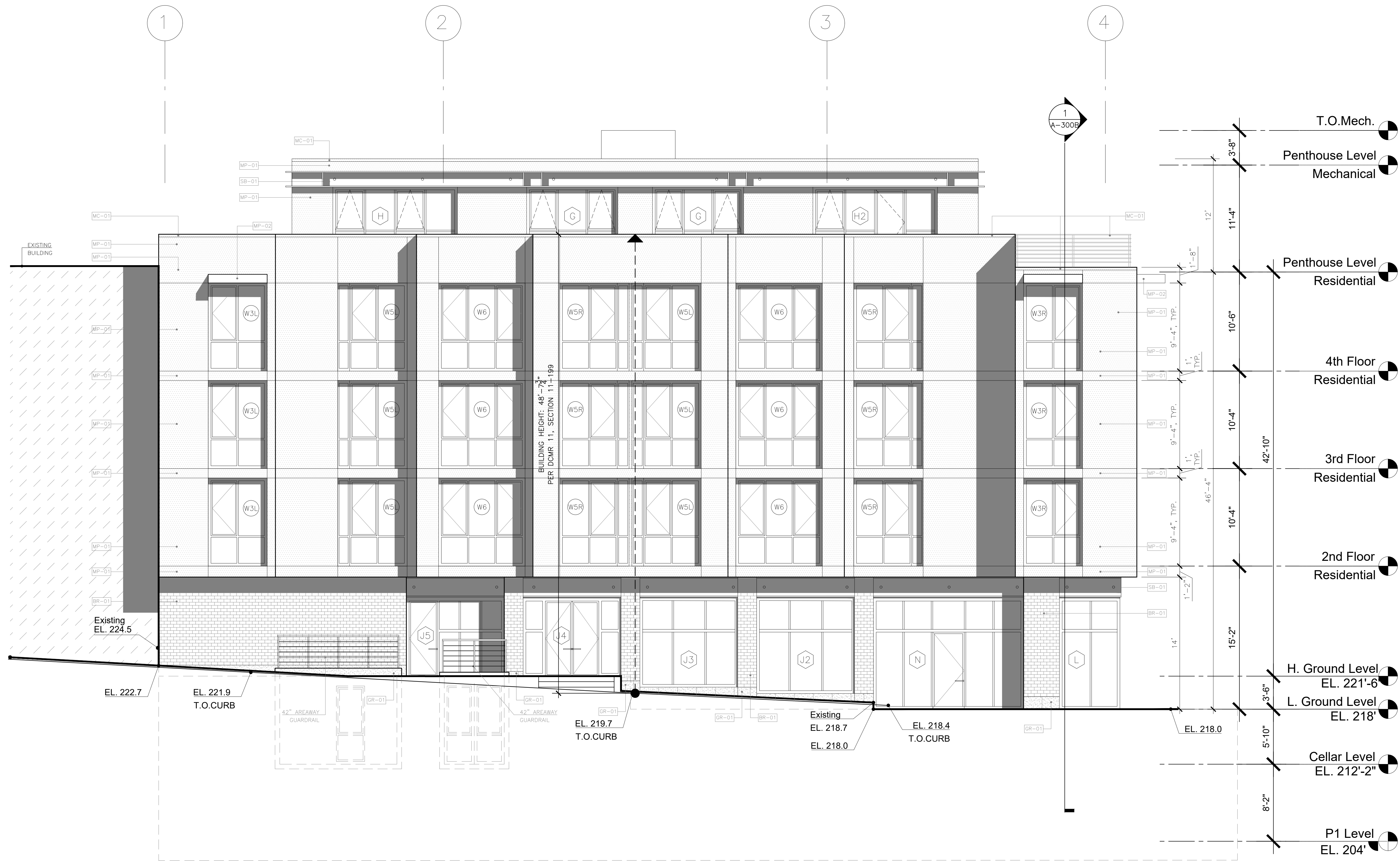
71 KENNEDY STR. NW
5505 1st St. NW / 67-71 Kennedy St. NW
Washington, DC 20011
PROJECT MANAGER: PENG WANG



SCALE: 3/16"=1'-0"
DATE:
PROJECT NUMBER:

SHEET TITLE
South Elevation

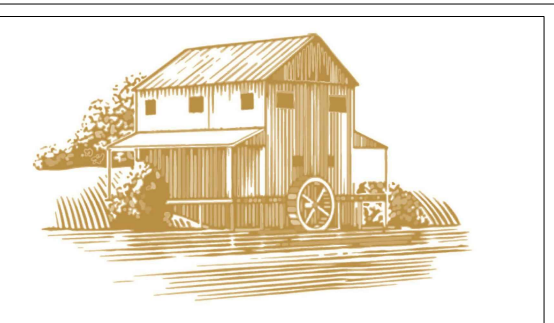
SHEET NUMBER
A-201



1 WEST ELEVATION @ 1ST STREET NW
3/16"=1'-0"

2 SHEET NOTES/LEGEND

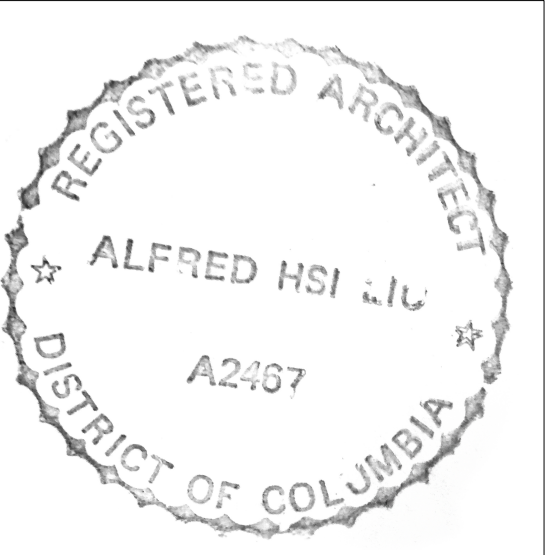
- BR-01 BRICK VENEER SB-01 STEEL
- MP-01 MP-02 METAL PANEL GR-01 GRANITE MC-01



COLOMA RIVER CAPITAL

Owner:
Coloma River Capital
Address:
1140 3rd Street NW,
Suite 2151,
Washington, DC 20002
Charles Paret
202-838-6941

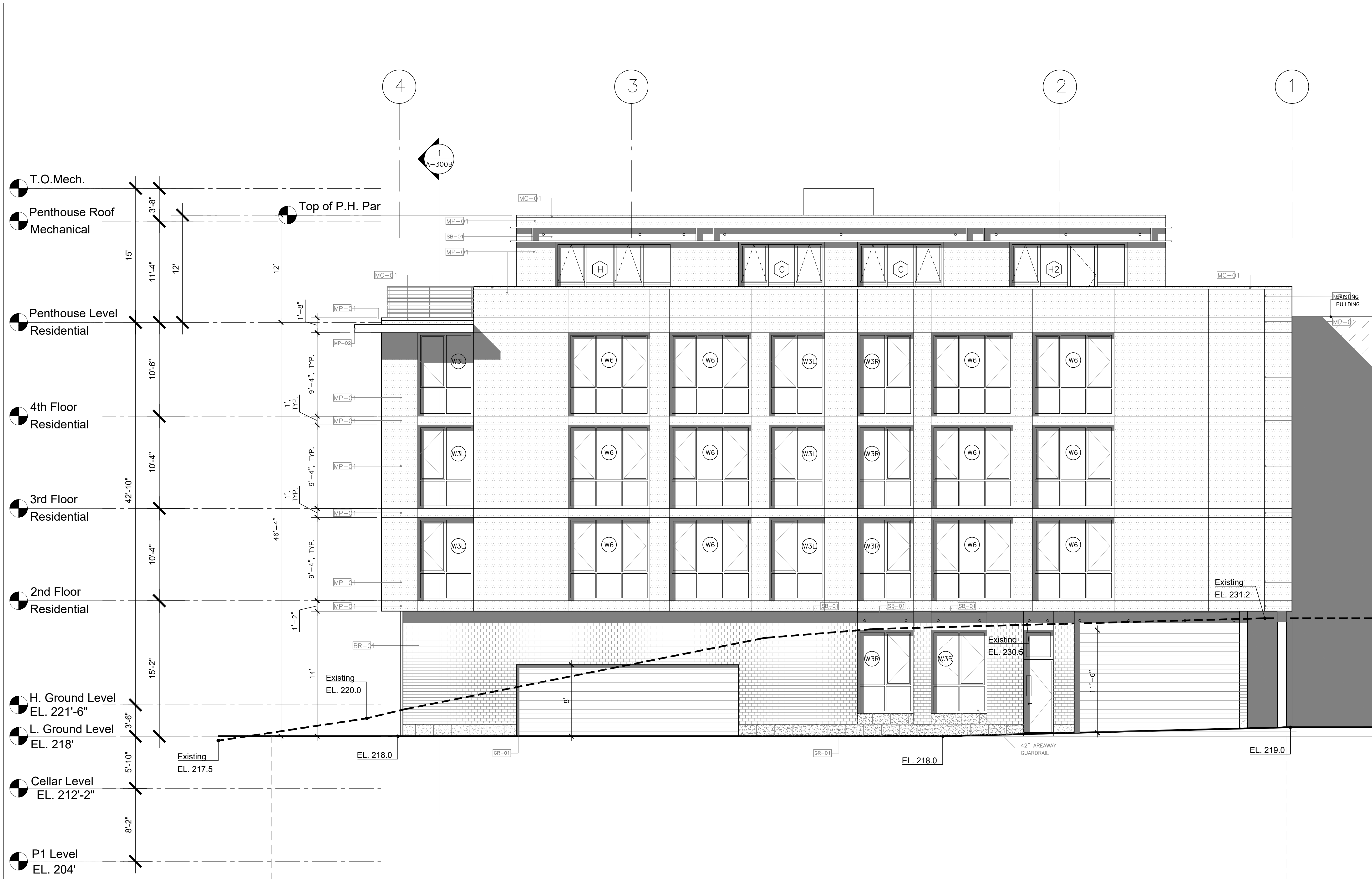
71 KENNEDY STR. NW
5505 1st St. NW / 67-71 Kennedy St. NW
Washington, DC 20011
PROJECT MANAGER: PENG WANG



SCALE: 3/16"=1'-0"
DATE:
PROJECT NUMBER:

SHEET TITLE
West Elevation

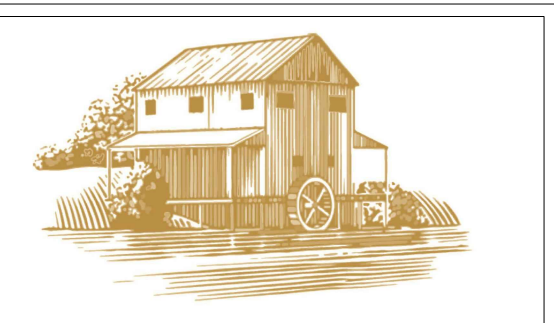
SHEET NUMBER
A-202



- BR-01 BRICK VENEER SB-01 STEEL
- MP-01 MP-02 METAL PANEL GR-01 GRANITE MC-01

1 EAST ELEVATION @ ALEEE
3/16"=1'-0"

2 SHEET NOTES/LEGEND



COLOMA RIVER CAPITAL

Owner:
Coloma River Capital
Address:
1140 3rd Street NW,
Suite 2151,
Washington, DC 20002
Charles Paret
202-838-6941

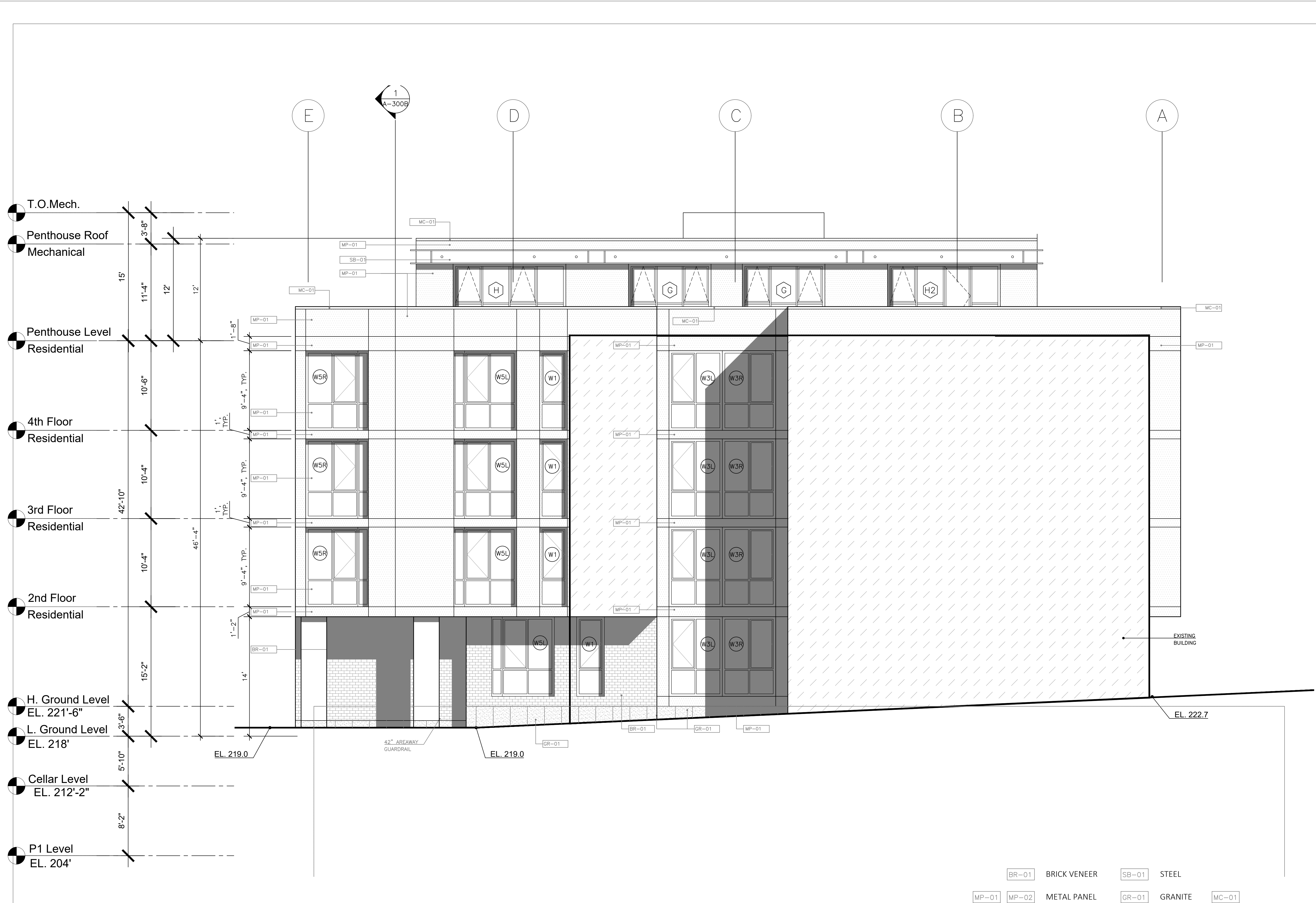
71 KENNEDY STR. NW
5505 1st St. NW / 67-71 Kennedy St. NW
Washington, DC 20011
PROJECT MANAGER: PENG WANG



SCALE: 3/16"=1'-0"
DATE: 1/30/2019
PROJECT NUMBER:

SHEET TITLE
East Elevation

SHEET NUMBER
A-203

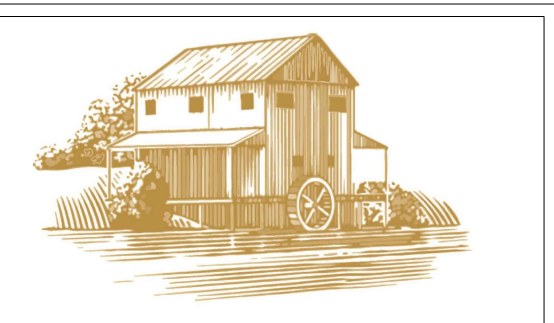


T.O.Mech.
 Penthouse Roof Mechanical
 Penthouse Level Residential
 4th Floor Residential
 3rd Floor Residential
 2nd Floor Residential
 H. Ground Level EL. 221'-6"
 L. Ground Level EL. 218'
 Cellar Level EL. 212'-2"
 P1 Level EL. 204'

1 NORTH ELEVATION
3/16"=1'-0"

BR-01 BRICK VENEER SB-01 STEEL
 MP-01 MP-02 METAL PANEL GR-01 GRANITE MC-01

2 SHEET NOTES/LEGEND



COLOMA RIVER CAPITAL

Owner:
Coloma River Capital
 Address:
 1140 3rd Street NW,
 Suite 2151,
 Washington, DC 20002
 Charles Paret
 202-838-6941

71 KENNEDY STR. NW
 5505 1st St. NW / 67-71 Kennedy St. NW
 Washington, DC 20011
 PROJECT MANAGER: PENG WANG



SCALE: 3/16"=1'-0"
 DATE:
 PROJECT NUMBER:

SHEET TITLE
North Elevation

SHEET NUMBER
A-204